

Partnered Learning Project (PLP)

Promoting interprofessional collaboration through team training and student placements

Project Outline

- Purpose of Study** a) capacity building in staff and students AND
b) descriptive – providing insight into the processes of interprofessional collaboration (IPC) and interprofessional education (IPE) and describing some early outcomes of these experiences
- Method** Mixed method research – both quantitative and qualitative data
➤ Quantitative – establish the basis for ongoing IPE/IPC attitudes database, supporting long-term evaluation of IPC/IPE program impact
➤ Qualitative – observations of teams, interviews with teams, observations during student placement, review of final student IPE project
- Data Analysis** ➤ Quantitative – descriptive statistical analysis of attitude survey results
➤ Qualitative – observational and interview data analyzed for emergent themes in constant comparative manner, using grounded theory analytical principles
Analytical rigour – audit trail, member-checking, and analytical memo-ing

Anticipated Participants	<u>SickKids</u>	<u>Toronto Rehab</u>	<u>CHEO</u>
Clinical Team Members	36	24	12
Students – various disciplines	18	12	6

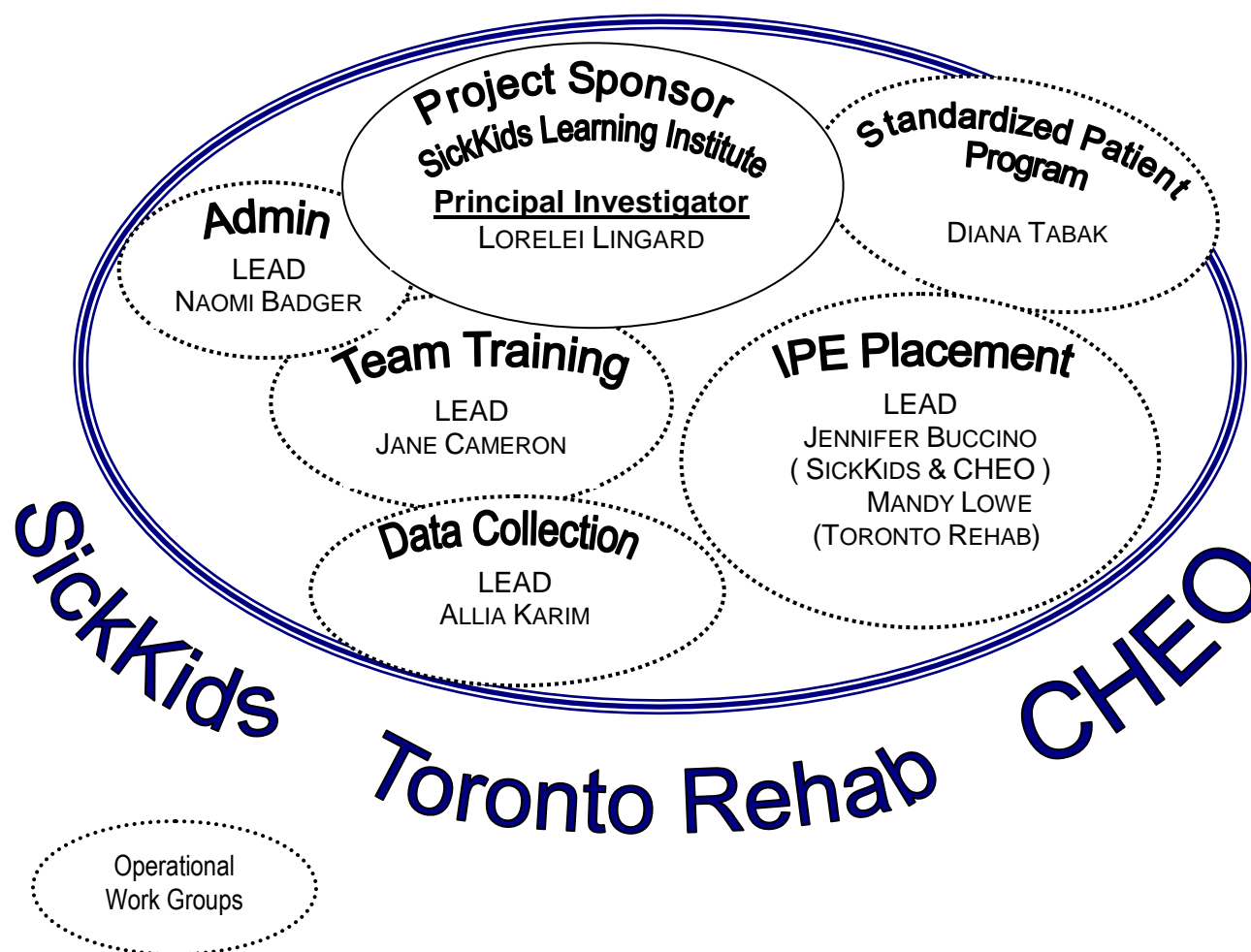
- Overall Goal** Improving:
i) interprofessional collaborative awareness and capacity to support student IPE learning;
and
ii) the way collaboration is taught to trainees in clinical settings.
- Overall Objectives**
1. Integrate IPC/IPE across educational & professional spheres yielding a descriptive model for simultaneous capacity development.
 2. Develop & test a PLP training module, yielding a resource kit & guidelines for adoption to other settings.
 3. Create a database to facilitate longitudinal assessment of impact on staff and student attitudes over repeated implementations.
- Study Outcomes and Objectives**
- Practice-based team training
1. Develop team training curriculum, yielding a resource kit for supporting IPC team training.
 2. Train teams (SickKids x 3, Toronto Rehab x 2, & CHEO x 1) in reflecting on their collaborative practices and supporting learning of IPE students.
 3. Evaluate impact of team training on a) learner's attitudes, and b) collaborative team approach to hosting students.
 4. Build capacity to support pre-licensure IPE placements, producing a cadre of 6 trained teams for potential use as future placements sites.
- Pre-licensure Placement
1. Adapt an existing MOH-funded IPE placement toolkit for paediatrics, yielding a UoT paediatric IPE placement, and a provincial model for such placements, through implementation at CHEO.
 2. Offer 6 student groups an IPE curriculum producing a cadre of 36* students trained in IPE/IPC. (* target)
 3. Evaluate the curriculum's impact on student attitudes & knowledge, towards evidence of effectiveness.
 4. Train selected SickKids & CHEO faculty as IPE facilitators and preceptors, creating a cadre of professionals with the potential to support future IPE paediatric placements.
- Study Long-term Objectives**
1. Contribute to evidence-based models that link IPC & IPE.
 2. Foster a culture of sustainable IPC through effective IPE.
 3. Encourage a more effective, integrated health care system.

Training Methods Includes: ➤ case-based discussions ➤ simulated team situations ➤ role play

Partnered Learning Project (PLP)

Promoting interprofessional collaboration through team training and student placements

PLP Steering Committee Design



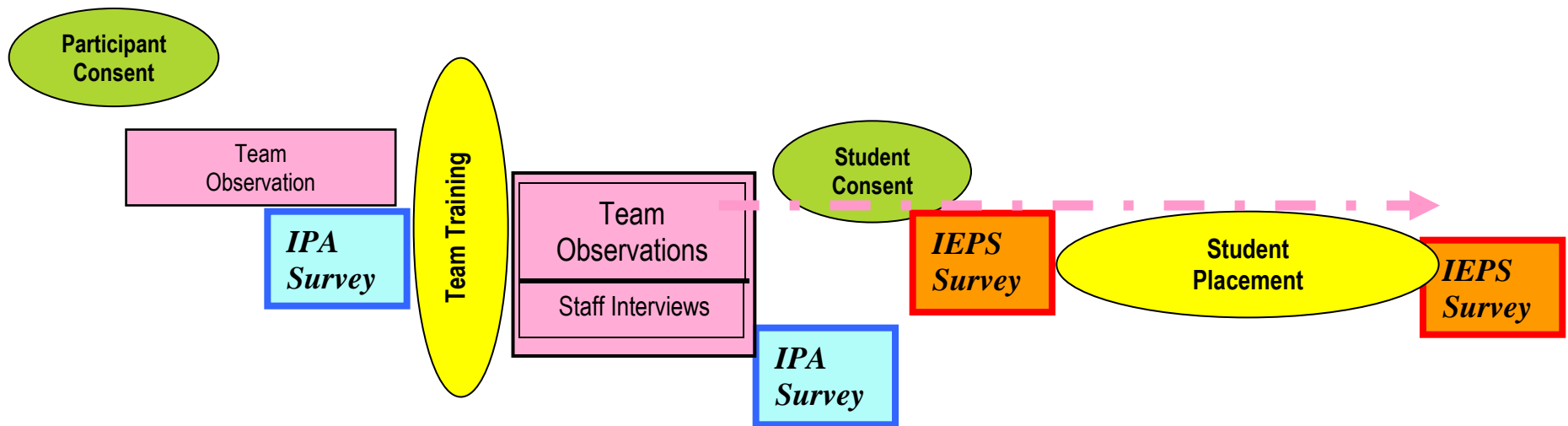
PLP Team Members

- Lorelei Lingard (SK)
- Susan Tallett (SK)
- Bonnie Fleming-Carroll (SK)
- Lynne Sinclair (TRI)
- Mandy Lowe (TRI)
- Joe Reisman (CHEO)
- Judy Rashotte (CHEO)
- Michele Durrant (SK)
- Jennifer Buccino *
- Allia Karim *
- Jane Cameron *
- Naomi Badger *
- Diana Tabak (SPP)
-* Project Staff

Partnered Learning Project (PLP) Participant Involvement & Data Gathering Process

Process for each participating team

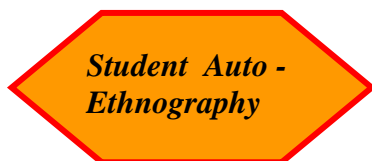
Target: Train clinical teams from SickKids - 3, Toronto Rehab - 2, and CHEO - 1



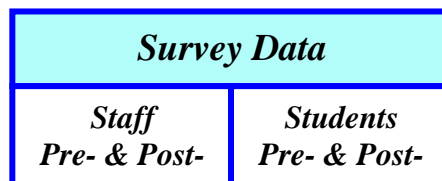
Survey Instruments: Staff – IPA - Interprofessional Attitudes Questionnaire
Students – IEPS - Interdisciplinary Education Perception Scale (Luecht)

Other Data

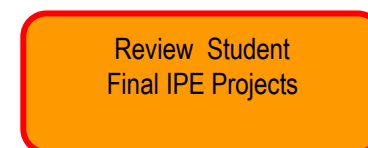
From Project Training Pilot



From Each Partnered Institution

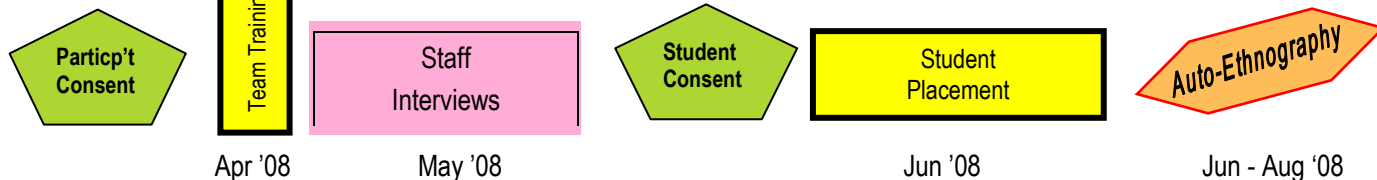


From Consenting Students

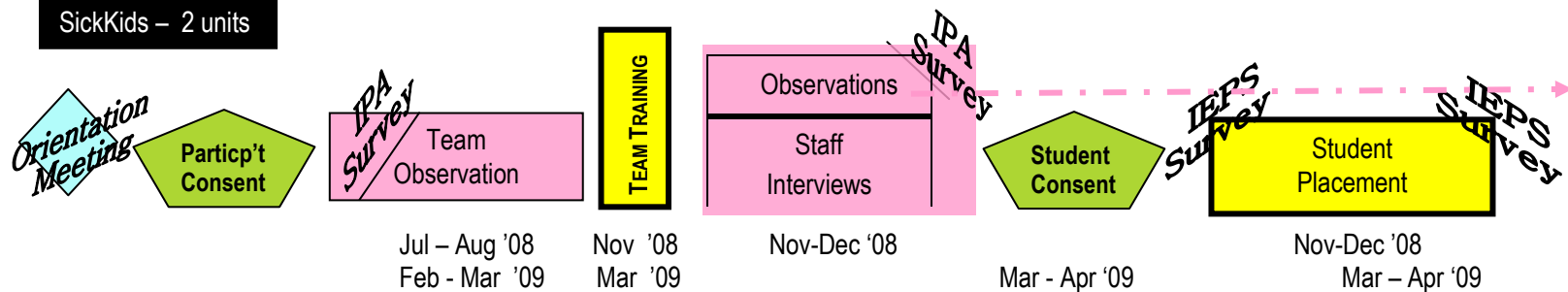


Partnered Learning Project (PLP) Project Scheduling Across Institutions

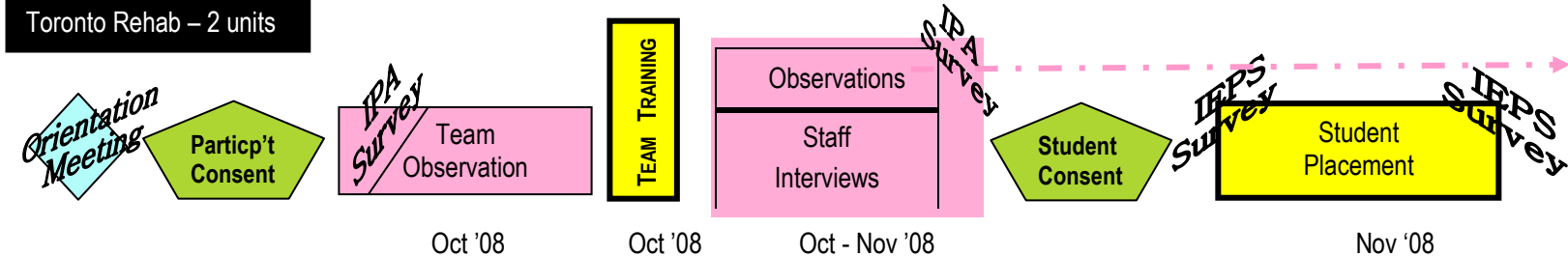
Pilot – SickKids



SickKids – 2 units



Toronto Rehab – 2 units



CHEO – 1 unit

